

# Miska™ LF110

Santoprene®  
Seal Welding

## Technical Data Sheet

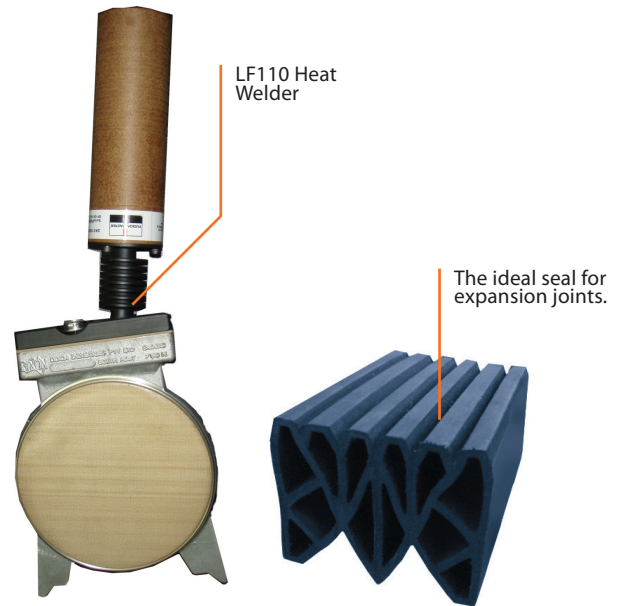
August, 2019

### Product Description

The Miska LF110 Heat Welder is a robust & reliable tool for the welding of Santoprene® seals for the Miska CP Series Expansion Joint Cover Systems and CS Series Compression Seals.

#### ✓ Product Description

- 1400w, 240v Heat welder for Miska CP Series.
- Robust, reliable and low maintenance.
- Product weight: 4.1kgs
- 250mm diameter working surface, double sided heating pads.
- Adjustable temperature control.
- Adjuster screw in rear of handle. Clockwise to increase heat, counter clockwise to reduce.
- Orange light to indicate power on.
- Red light indicates pads are heating.
- Heater reaches working temperature in less than 10 minutes.
- Provides controlled uniform surface temperature.



#### ✓ Seal joining process through heat welding

Santoprene seals can be quickly and easily heat welded on site to ensure a continuous seal through the joint, and enable upturns through gutters, barriers, columns & walls. Details of the process are available in the CP Installation and Work Method process.



### Recommended for use with the Miska CP Series Expansion Joint System & CS Series Compression Seals.

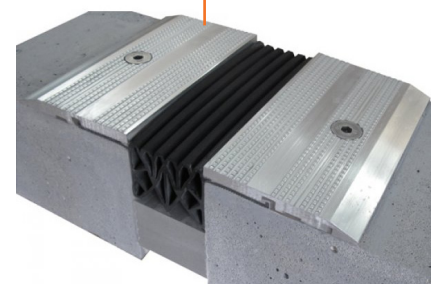
The Car Park (CP Series) Expansion Joint System incorporates a plate and seal design to provide a low profile, foot-safe and watertight construction joint cover solution.

This system utilises proven compression seal methodology and improves on traditional systems by incorporating a mechanically fixed side plate locking strip. The aluminium side plates reduce the seal footprint, eliminates concrete spalling and retains the seal.

#### ✓ Features

- Load Rating AS1170.1 Retail Areas
  - Type F light road vehicle to, 2.5t, 13kN over 10000mm<sup>2</sup>
  - Type G road vehicle to 10t, 31 kN over 25000mm<sup>2</sup>
- Santoprene™ (TPV) Seal material
- Quiet transition & No noise propagation.
- UV Stable
- Foot safe for pedestrian traffic. Surface compliant to Aust Standards AS/NZS 4586 and 4663. Categorized as a "V" class surface (R11)

Load Rating to AS1170.1 - Car Park to 2.5t Structural Grade Aluminium 6061



AUS: 1300 326 539 | NZ: 0800 88 22 55 | W: www.miska.com.au