

Miska™ CP Series

Car Park
Expansion Joint
Cover System

Technical Data Sheet

April, 2020

Product Description

The CP Series Expansion Joint System is low-profile, waterproof and has a high point load capacity suitable for vehicle and pedestrian traffic without moving parts that generate noise.

The CP system is designed for environments such as: retail parking areas and multi level car parks, indoor and outdoor public spaces, pedestrian bridges & footpaths, heavy duty and emergency vehicle service areas.

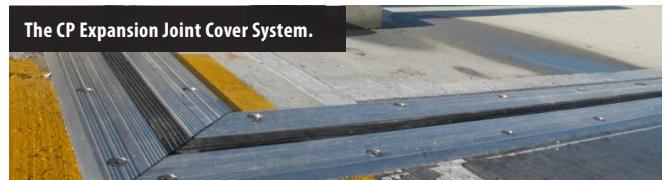
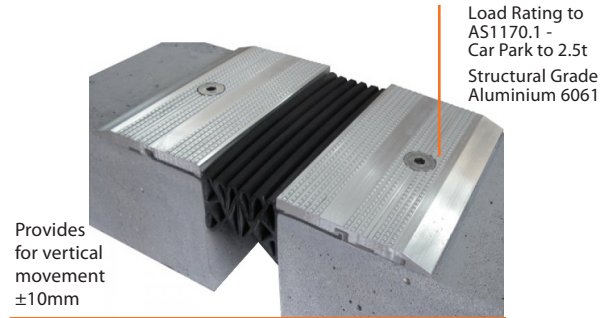
Features

- Load Rating AS1170.1 Retail Areas
 - Type F light road vehicle to, 2.5t, 13kN over 10000mm².
 - Type G road vehicle to 10t, 31 kN over 25000mm².
- Santoprene™ (TPV) Seal material.
- Quiet Transition & No Noise Propagation
- UV Stable.
- Foot safe for pedestrian traffic. Surface compliant to Aust Standards AS/NZS 4586 and 4663. Tested to P4 Rating.
- Structural Grade Aluminium 6061.
- Vertical Movement ± 10 mm.
- Seals can be heat welded on-site.

- Protects joint edges from spalling.
- Aluminium Side Plates Standard length = 3.6m.
- Seal supplied in continuous lengths up to 25 metres.
- Fixings sit flush with the cover plate and do not form part of the expansion mechanism.
- System supplied with:
 - FC120™ Epoxy Mortar
 - FC480™ Lubricant Epoxy Adhesive
 - All installation fixings supplied.

Other Options

- FC122™ Epoxy Grout for repairing damaged decks.
- LF110™ Heat Welding Pad.



Material

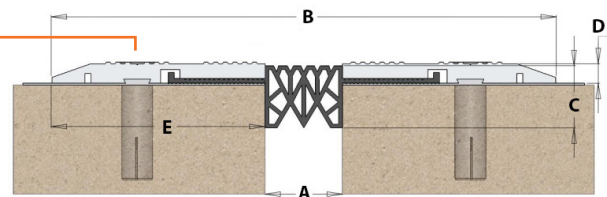
- AI Aluminium Coverplate
- SP Santoprene™ Seal

Environment

- Light/Heavy Duty Vehicles
- Indoor/Outdoor
- Pedestrian
- Service Equipment

Installation

Work method instructions provided on request, or we can provide contacts for certified installers in your area.



Product Specifications

No Block-out required.

Part #	A = Gap				B = Exposed Width			C	D	E
	Min	Mid	Max	Mvmt	Min	Mid	Max	Height	Height	Width
EJCP540K	12mm	25mm	38mm	26mm	232mm	246mm	260mm	32mm	10mm	110mm
EJCP565K	30mm	47mm	63mm	33mm	250mm	267mm	284mm	52mm	10mm	110mm
EJCP595K	45mm	69mm	93mm	48mm	265mm	290mm	315mm	72mm	10mm	110mm

AUS: 1300 326 539 | NZ: 0800 88 22 55 | W: www.miska.com.au